

Molecular Detection Of Bifidobacterium Dentium From Patients With Tooth Caries

Fatima Malik Al-Rubea¹, Reyam Abdul Khuder Mohammed², Mohammed M. Barrak³, Ahmed Jaber Aboob⁴

¹College of Dentistry, university of Babylon

²B.V.S, M.Sc. Oral Microbiology, Al-Mustaqbal University College, Department of Radiology Techniques, Hilla, IRAQ

³Medical Laboratory Techniques Department, Kut University College, Iraq

⁴B.D.S., M.Sc. Oral Microbiology, Babylon health directorate, Hilla, IRAQ

Abstract:

The goal of this study for molecular detection of Bifidobacterium dentium from patients with tooth caries. Samples were taken from the root caries lesions of nine distinct patients, which yielded 150 samples. fastidious anaerobe broth was used to dilute the samples. Then identifications of bacteria were done by using biochemical tests. DNA of suspected bacteria were extracted and two primers were used for detection of B. dentium (CI and 16S rDNA). According to conventional techniques and biochemical analyses, 28 isolates were B. dentium. whereas molecular identification identified 24 (85.7 percent) of the isolates as being of B. dentium. To find particular genes, all the isolates in this investigation were subjected to PCR using species-specific primers and a PCR method called conventional PCR.

In conclusion, B. dentium was detected in a high percentage in dental caries patients which were diagnosed by .bacteriological and molecular methods.

Key words: B. dentium, Tooth caries, PCR.

Introduction:

Dieto-bacterial dental caries is the most frequent oral cavity illness in children and a major public health issue across the world. Cariogenic flora and cariogenic foods combine to cause the disease. Koch's postulates led the majority of previous researchers to concentrate their efforts on a small number of microorganisms in pure cultures. Even yet, the exact origin of a severe case of dental caries is a mystery. acidic and acid-resistant microorganisms have been found in the majority of studies (Xu et al., 2014).

Bacteria from both animals and people have been used to create the Bifidobacteriaceae family of Bifidobacteriums, which includes the genera *Aeriscardo*, *Alloscardo*, *Bifidobacterium*, *Gardnerella* et al. Gram-positive anaerobic bacilli are found mostly in the digestive system of humans (Scardovi, 1986). In addition to lowering the quantity of dangerous bacteria in the host, they have been shown to increase gut immunity (Gill et al., 2001).

Bifidobacterium has been identified in the mouth in recent studies (Beighton et al., 2008). Bacteria from the oral biofilm *Bifidobacterium dentium* and *longum*, two of the ten species, have been detected in saliva (Modesto et al., 2006). "(Beighton and colleagues, 2008); A research detected *Bifidobacterium* in 80% of plaque samples from young children with caries (Aas et al., 2008; Tanner et al., 2011). Children with caries had a greater prevalence of *Bifidobacterium* in their saliva than those without the disease (95% vs. 9%). (Kaur et al., 2013). A new caries-causing bacteria has been identified as oral *Bifidobacterium* based on these findings. *B. dentium* is the most prevalent kind of *Bifidobacterium* in the oral cavity (Munson et al., 2004). Additionally, *B. longum* may be found in the human oral cavity on a regular basis (Nyvad and Kilian, 1990; Aas et al., 2008; Mantzourani et al., 2009).

It has been shown that these bacteria are very acid-resistant as a consequence They have a superior survival rate than *Streptococcus mutans* and *Lactobacilli paracasei* when it comes to intracellular pH. (Nakajo et al., 2010). It is one of the most important caries-inducing factors because bacteria's ability to create acids under acidic settings is one that is acquired from the breakdown of carbohydrates. According to recent research, the so-called "bifid shunt" is a unique metabolic route found only in *Bifidobacterium* species. Glycolysis (Embden-Meyerhof-Parnas pathway) is the most common method of metabolizing carbohydrates in bacteria that cause dental caries, such as *S. mutans*. Acetate and lactate are both produced by *Bifidobacterium* species when they metabolize carbohydrates through the "bifid shunt." There is still a lot to learn about how caries-related *B. longum* and *B. dentium* digest carbohydrates and produce acids in the mouth. The goal of this study for molecular detection of *Bifidobacterium dentium* from patients with tooth caries.

Materials and patients:

Samples were taken from the root caries lesions of nine distinct patients, which yielded 150 samples. fastidious anaerobe broth was used to dilute the samples. It was necessary to use modified MTPY medium in order to isolate bifids from the aliquots of samples. The medium

was autoclaved at anaerobic conditions. Then identifications of bacteria were done according to the (Markey et al., 2013)

DNA of bacteria were extracted by using Promega kit, the method of extraction was done according to the manufacturer instructions.

Primers:

Two primers were used for detection of *B. dentium*:

CI F: 5'-GTS CAY GAR GGY CTS AAG AAG CAG GAA AGA ACA TGT GAG CA-3'

CI R: 5'-CCR TCC TGG CCR ACC TTG TAC GAC CTA CAC CGA ACT GAG A-3'.

16S rDNA

F (5'-GAAGAGTTTGATCCTGGCTCAG-3') 700 bp

R (5'-CTACGGCTACCTTGTACGA-3').

Two milliliters of template DNA, two milliliters of particular primers, ten milliliters of 2x Taq master mix, and eleven milliliters of PCR grade water were used to make the PCR mixture used in the experiment. When it came to doing PCR, a heat cycler was used.

An all-purpose PCR method was used to CI gene up the DNA samples. Initial denaturation took 5 minutes at 94°C, followed by 1 minute at 54°C annealing, 1 minute at 72°C extension, followed by a final 7minute extension at 72°C. This was followed by 35 cycles of denaturation, extension, and annealing at 72°C.

For PCR method of 16S rDNA, only different in the annealing temperature were 56 °C.

Electrophoresis agarose gel was used to examine DNA samples, ladder of 100bp was used.

Results:

According to conventional techniques and biochemical analyses, 28isolateswere*B. dentium*. whereas molecular identification identified 24 (85.7 percent) of the isolates as being of *B. dentium*(Table 1). To find particular genes, all the isolates in this investigation were subjected to PCR using species-specific primers and a PCR method called conventional PCR (Fig. 1, 2).

Table 1. Numbers of bacteria isolated by traditional methods VS molecular methods

Method	No. <i>B. dentium</i>	percentage
--------	-----------------------	------------

Biochemical method	28	18.7
Molecular method	24	85.7

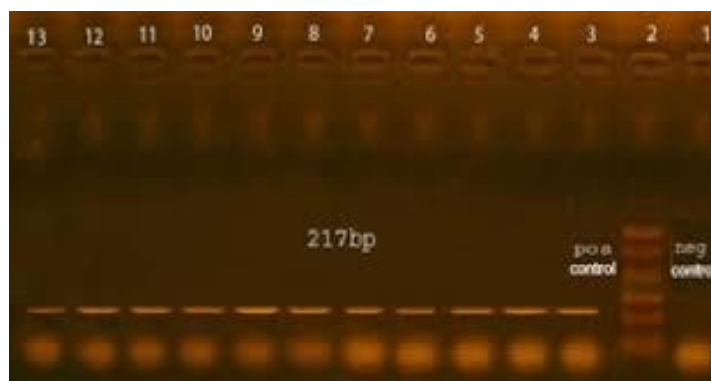


Figure 1. PCR of *B. dentium* at 217 bp of *Cl* gene. Lane M represents 100 bp DNA marker.

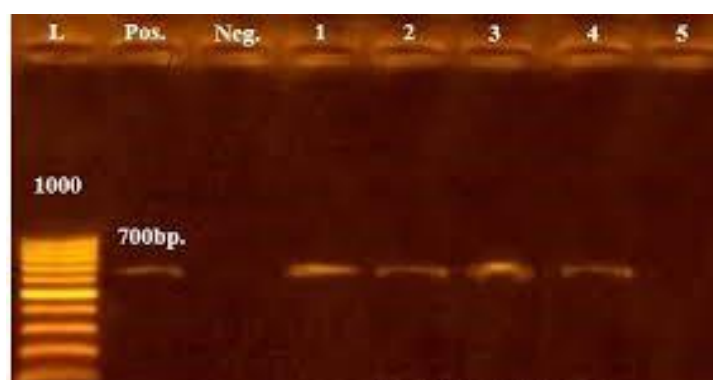


Figure 1. PCR of *B. dentium* at 700 bp of 16S rDNA. Lane M represents 100 bp DNA marker.

Discussion:

It has been observed that bifidobacteria that are both acidogenic and aciduric are oral cavity commensal microorganisms, even if their importance in oral health is still up in the air. They've been linked to the development of cavities in children, adolescents, and adults, as well as the elderly (Beighton et al., 2010; Mantzourani et al., 2009). When the microbiology of occlusal caries lesions was investigated, bifidobacteria were detected exclusively at the areas of active decay (Dige et al., 2014).

Bifidobacteria may be isolated from saliva, plaque, and caries lesions samples (Mantzourani et al., 2009).

In our investigation, *Bifidobacterium dentium* (*B. dentium*) was detected in 18.7 percent of dental caries patients, which is less than our prevalence of 30.8 percent (Henne et al., 2015).

For example, PCR and oligonucleotide probes have been used to detect *Bifidobacterium* strains (Kullen et al., 1997, Matsuki et al., 1999, Requena et al., 2002). PCR-based techniques have been used to identify a single or a few species in most research. Group-specific polymerase chain reaction (PCR) approaches have recently been developed to identify *Bifidobacterium* species from a wide range of sources (Matsuki et al., 1998; Mullie et al., 2003). Until now, no PCR approach has been able to differentiate more than five species at a time. Individual primer sets based on 16S, 23S rRNA gene or ISR sequences were blamed for this (Leblong-Bourget et al., 1996). In order to identify a wide range of potentially probiotic *Bifidobacterium* species using a single PCR test, our research focused on developing multiplex primer sets for each of these species.

When DNA-DNA hybridization, 16S rDNA sequence analysis and particular probe hybridization were initially established as molecular identification procedures, they were called DNA-DNA hybridization, 16S rDNA sequence analysis, and hybridization with specific probes. Molecular identification is distinct from physiological and biochemical features in that nucleic acid composition is used as a basis for identification.

It is common to utilize molecular approaches in conjunction with traditional microbiological identification. It is possible to measure DNA-DNA hybridization by utilizing membrane filters for DNA fixation and radioisotopes for detection (Crociani et al., 1996), or by using a microplate and photobiotin (Yaeshima et al., 1996).

Conclusion:

B. dentium was detected in a high percentage in dental caries patients which were diagnosed by bacteriological and molecular methods.

References:

- Aas, J. A., Griffen, A. L., Dardis, S. R., Lee, A. M., Olsen, I., Dewhirst, F. E., et al. (2008). Bacteria of dental caries in primary and permanent teeth in children and young adults. *J. Clin. Microbiol.* 46, 1407–1417. doi: 10.1128/JCM.01410-07.
- Beighton, D., Gilbert, S. C., Clark, D., Mantzourani, M., Al-Haboubi, M., Ali, F., et al. (2008). Isolation and identification of *Bifidobacteriaceae* from human saliva. *Appl. Environ. Microbiol.* 74, 6457–6460. doi: 10.1128/AEM.00895-08
- Crociani F., Biavati B., Alessandrini A., Chiarini C., Scardovi V., *Bifidobacterium inopinatum* sp. nov. and *Bifidobacterium denticolens* sp. nov., two new species isolated from human dental caries, *Int. J. Syst. Bacteriol.* 46 (1996) 564–571.

Dige, I., GrønkJær, L., & Nyvad, B. (2014). Molecular studies of the structural ecology of natural occlusal caries. *Caries research*, 48(5), 451-460.

Gill, H. S., Rutherford, K. J., Cross, M. L., and Gopal, P. K. (2001). Enhancement of immunity in the elderly by dietary supplementation with the probiotic *Bifidobacterium lactis* HN019. *Am. J. Clin. Nutr.* 74, 833–839. doi: 10.1093/ajcn/74.6.833

Henne K, Rheinberg A, Melzer-Krick B, Conrads G. (2015). Aciduric microbial taxa including *Scardovia wiggsiae* and *Bifidobacterium* spp. in caries and caries free subjects. *Anaerobe.*;35(Pt A):60-5. doi: 10.1016/j.anaerobe.2015.04.011. Epub 2015 Apr 28.

Kaur, R., Gilbert, S. C., Sheehy, E. C., and Beighton, D. (2013). Salivary levels of *Bifidobacteria* in caries-free and caries-active children. *Int. J. Paediatr. Dent.* 23, 32–38. doi: 10.1111/j.1365-263X.2011.01220.x.

Kullen M.J. Brady L.J. O'sullivan D.J. (1997) Evaluation of using a short region of the *RecA* gene for rapid and sensitive speciation of dominant *bifidobacteria* in the human large intestine. *FEMS Microbiol. Lett.*154, 377–383.

Leblong-Bourget N. Philippe H. Mangin I. Decaris B. (1996) 16S rRNA and 16S to 23S internal transcribed spacer sequence analyses reveal inter- and intraspecific *Bifidobacterium* phylogeny. *Int. J. Syst. Bacteriol.*46, 564–571.

Lee, J. H., and O'Sullivan, D. J. (2010). Genomic insights into *Bifidobacteria*. *Microbiol. Mol. Biol. Rev.* 74, 378–416. doi: 10.1128/MMBR.00004-10.

Mantzourani, M., Gilbert, S. C., Sulong, H. N., Sheehy, E. C., Tank, S., Fenlon, M., et al. (2009). The isolation of *Bifidobacteria* from occlusal carious lesions in children and adults. *Caries Res.* 43, 308–313.

Markey, B., Leonard, F., Archambault, M., Cullinane, A., & Maguire, D. (2013). *Clinical veterinary microbiology e-book*. Elsevier Health Sciences.

Matsuki T. Watanabe K. Tanaka R. Fukuda M. Oyaizu H. (1999) Distribution of *bifidobacterial* species in human intestinal microflora examined with 16S rRNA-gene-targeted species-specific primers. *Appl. Environ. Microbiol.*65, 4506–4512.

Matsuki T. Watanabe K. Tanaka R. Oyaizu H. (1998) Rapid identification of human intestinal *bifidobacteria* by 16S rRNA-targeted species- and group-specific primers. *FEMS Microbiol. Lett.*167, 113–121.

Modesto, M., Biavati, B., and Mattarelli, P. (2006). Occurrence of the family Bifidobacteriaceae in human dental caries and plaque. *Caries Res.* 40, 271–276. doi: 10.1159/000092237

Mullie C. Odou M. Shinger E. Romond M. Izard D. (2003) Multiplex PCR using 16S rRNA gene-targeted primers for the identification of bifidobacteria from human origin. *FEMS Microbiol. Lett.* 222, 129–136.

Munson, M. A., Banerjee, A., Watson, T. F., and Wade, W. G. (2004). Molecular analysis of the microflora associated with dental caries. *J. Clin. Microbiol.* 42, 3023–3029.

Nakajo, K., Takahashi, N., and Beighton, D. (2010). Resistance to acidic environments by the caries-associated bacteria: *Bifidobacterium dentium* and *Bifidobacterium longum*. *Caries Res.* 44, 431–437.

Nyvad, B., and Kilian, M. (1990). Microflora associated with experimental root surface caries in humans. *Infect. Immun.* 58, 1628–1633.

Requena T. Burton J. Matsuki T. Munro K. Simon M.A. Tanaka R. Watanabe K. Tannock G.W. (2002) Identification, detection, and enumeration of human *Bifidobacterium* species by PCR targeting the transaldolase gene. *Appl. Environ. Microbiol.* 68, 2420–2427.

Ruas-Madiedo, P., Hernández-Barranco, A., Margolles, A., and de los Reyes-Gavilán, C. G. (2005). A bile salt-resistant derivative of *Bifidobacterium animalis* has an altered fermentation pattern when grown on glucose and maltose. *Appl. Environ. Microbiol.* 71, 6564–6570. doi: 10.1128/aem.71.11.6564-6570.2005.

Sánchez, B., Champomier-Vergès, M. C., Anglade, P., Baraige, F., de Los Reyes-Gavilán, C. G., and Margolles, A. (2005). Proteomic analysis of global changes in protein expression during bile salt exposure of *Bifidobacterium longum* NCIMB 8809. *J. Bacteriol.* 187, 5799–5808.

Scardovi, V. (1986). “Irregular nonsporing gram-positive rods, genus *Bifidobacterium* Orla-Jensen 1924,” in *Bergey’s Manual of Systematic Bacteriology*, eds P. H. A. Sneath, N. S. Mair, M. E. Sharpe, and J. G. Holt (Baltimore, MD: Williams and Wilkins), 1418–1434.

Takahashi, N. (2015). Oral microbiome metabolism: from “Who are they?” to “What are they doing?”. *J. Dent. Res.* 94, 1628–1637. doi: 10.1177/0022034515606045

Tanner, A. C., Kent, R. L., Holgerson, P. L., Hughes, C. V., Loo, C. Y., and Kanasi, E. (2011). Microbiota of severe early childhood caries before and after therapy. *J. Dent. Res.* 90, 1298–1305.

Xu H, Hao W, Zhou Q, Wang W, Xia Z, Liu C, et al. Plaque bacterial microbiome diversity in children younger than 30 months with or without caries prior to eruption of second primary molars. PLoS One 2014;9:e89269.

Yaeshima T., Takahashi S., Ishibashi N., Shimamura S., Identification of bifidobacteria from dairy products and evaluation of a microplate hybridization method, Int. J. Food Microbiol. 30 (1996) 303–313.